

MOSAIC

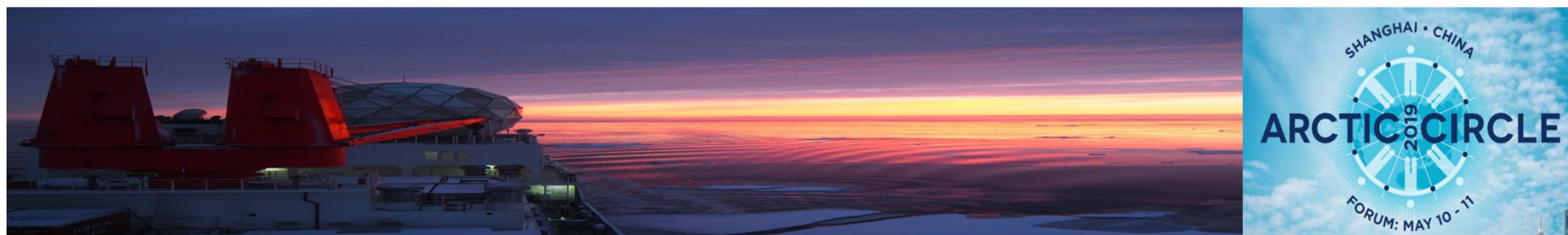
International
Arctic Drift
Expedition



Chinese contributions to the MOSAIC

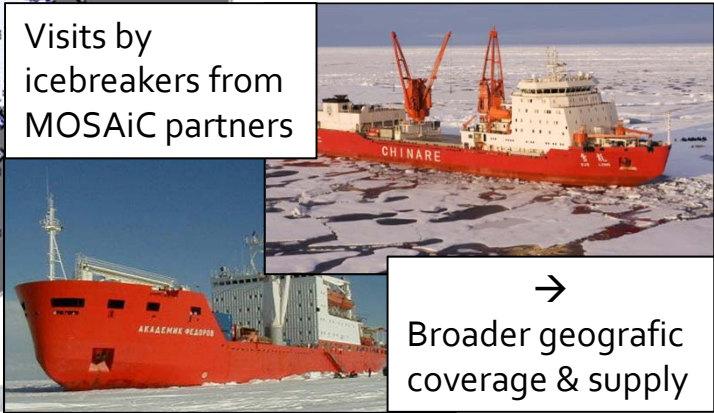
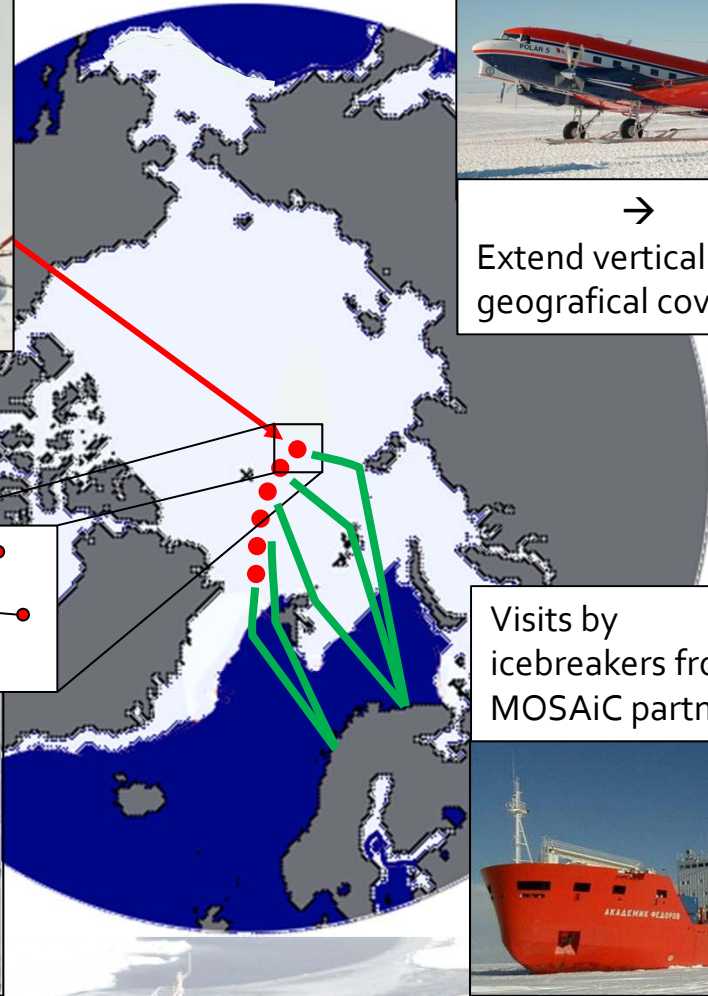
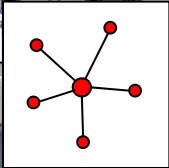
Ruibo Lei

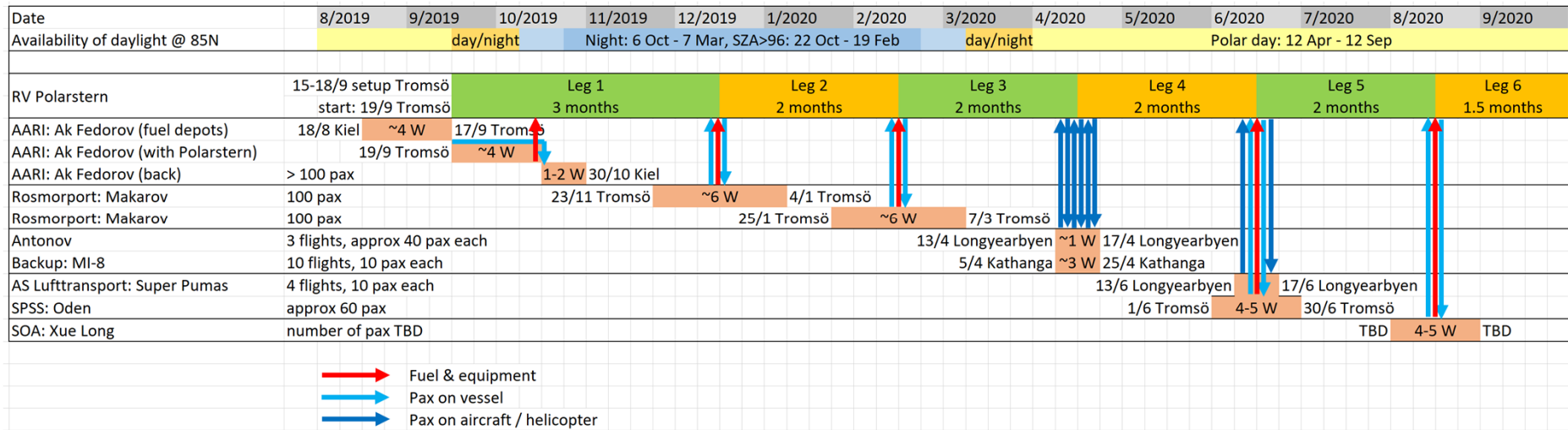
Polar Research Institute of China





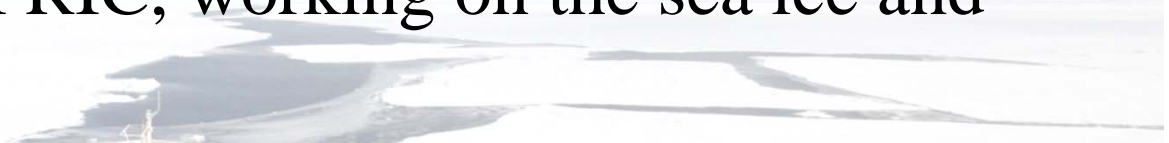
Drift summer 2019
to summer 2020

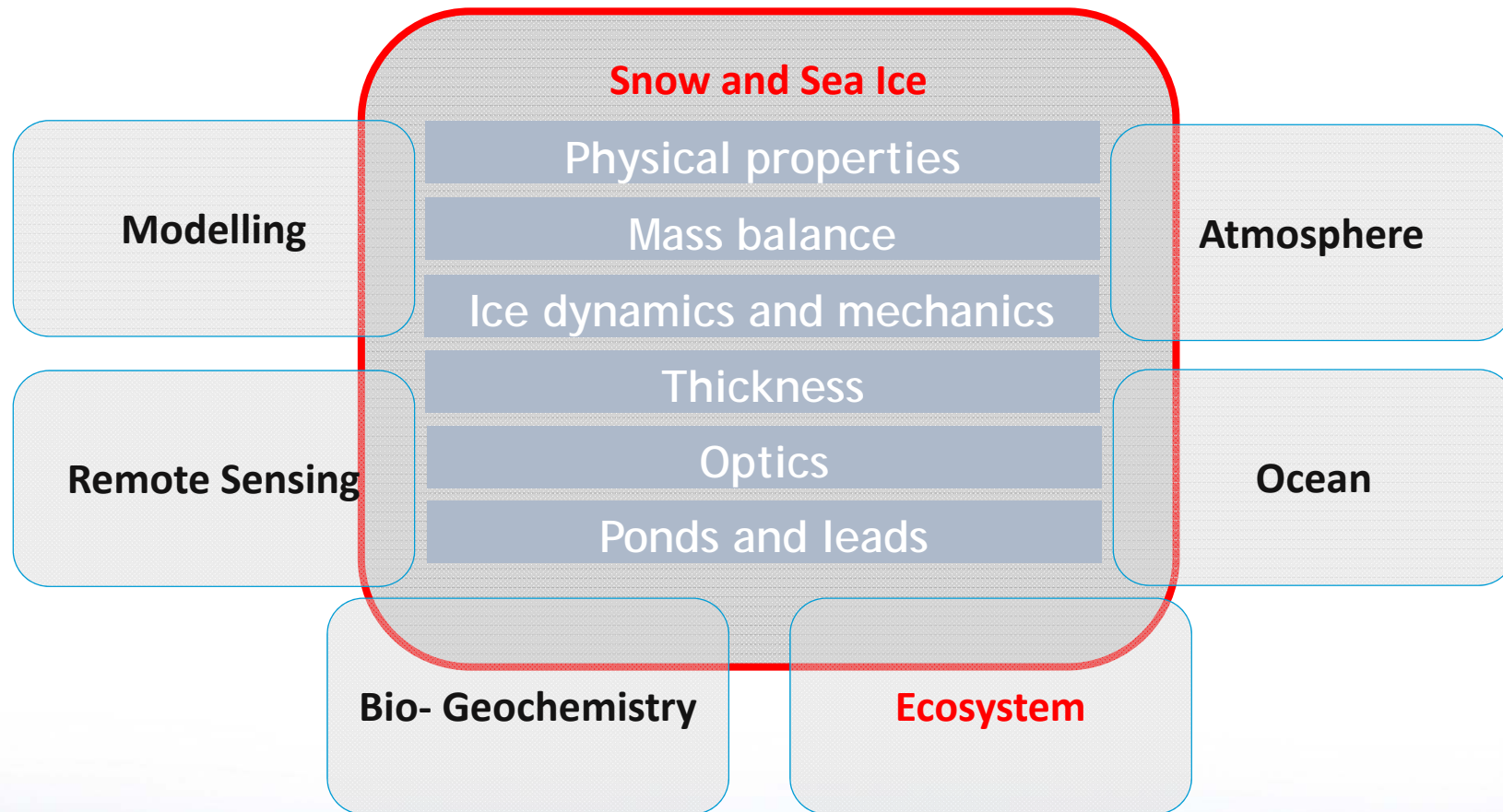




18 persons from China will attend the MOSAiC , covering all Scientific Working Group and all legs.

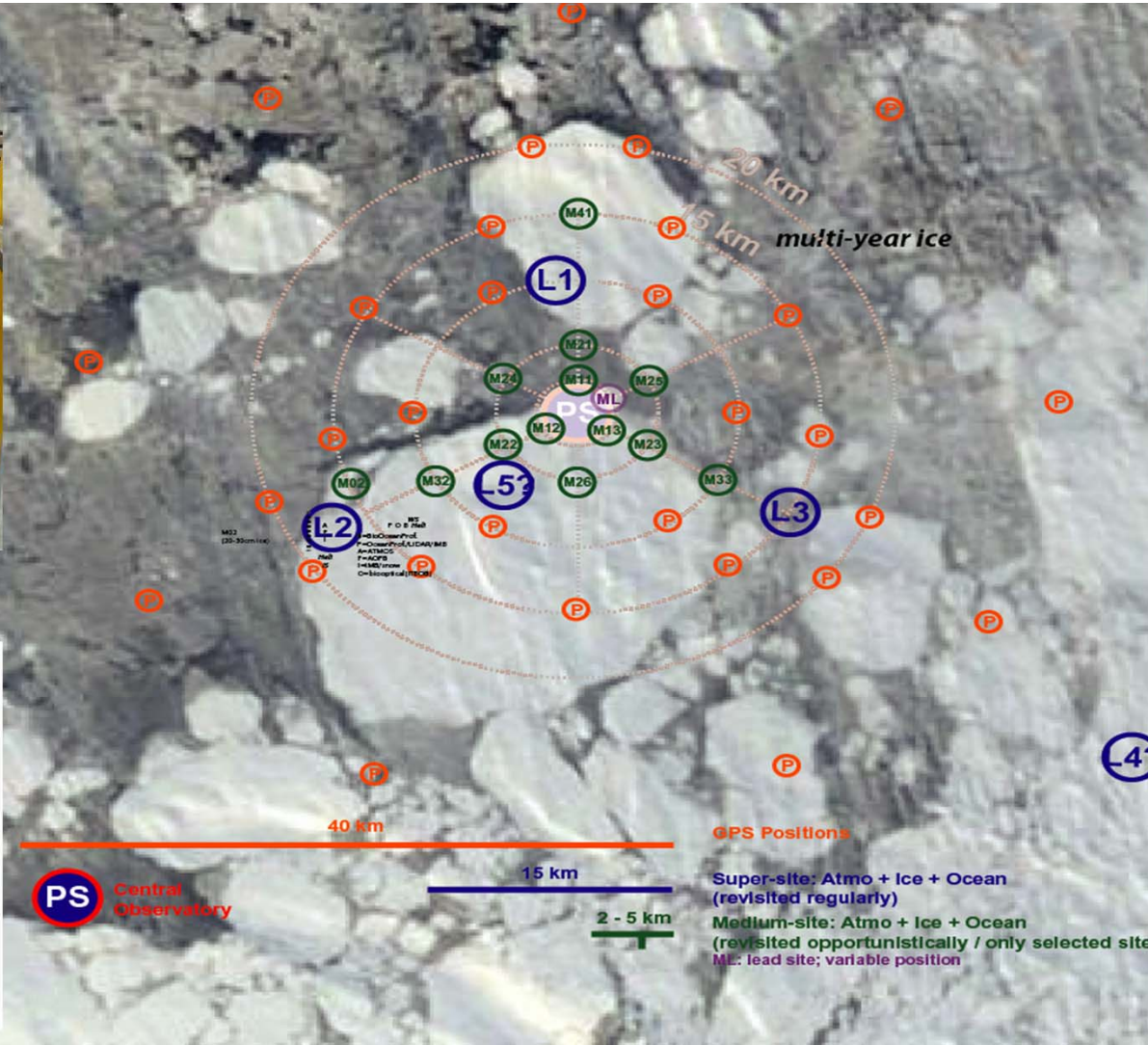
Three people from the PRIC, working on the sea ice and Ecosystem.

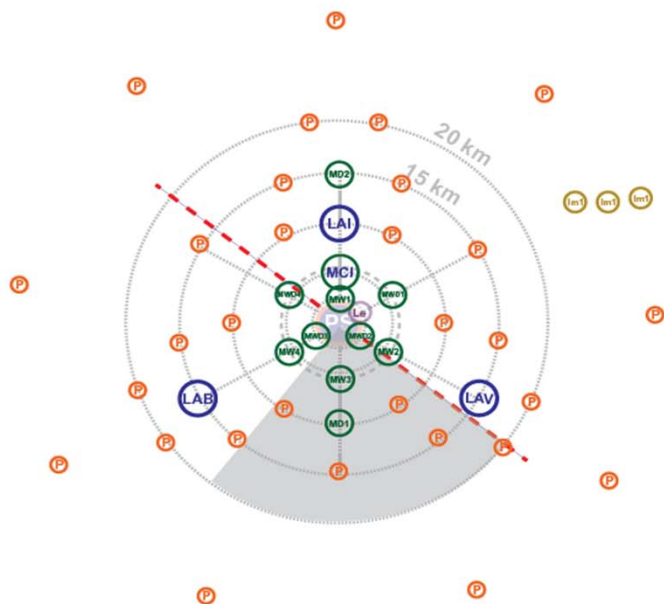




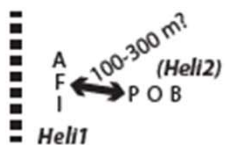
Sea ice is a great integrator in the middle of everything

new ice

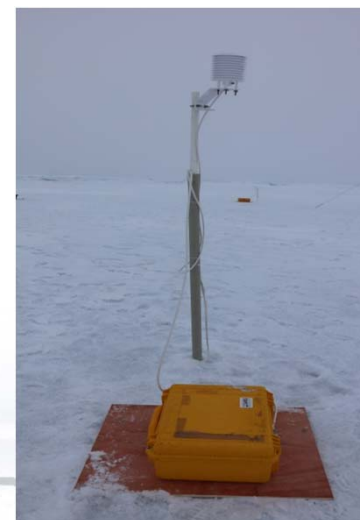
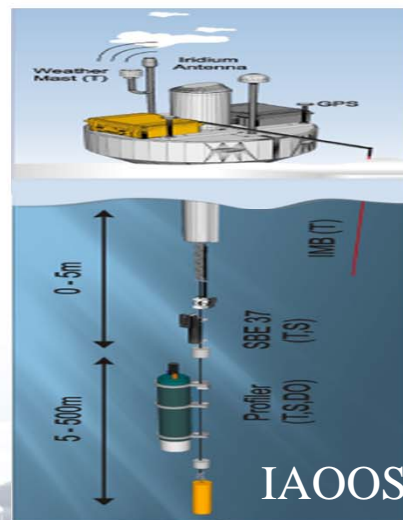
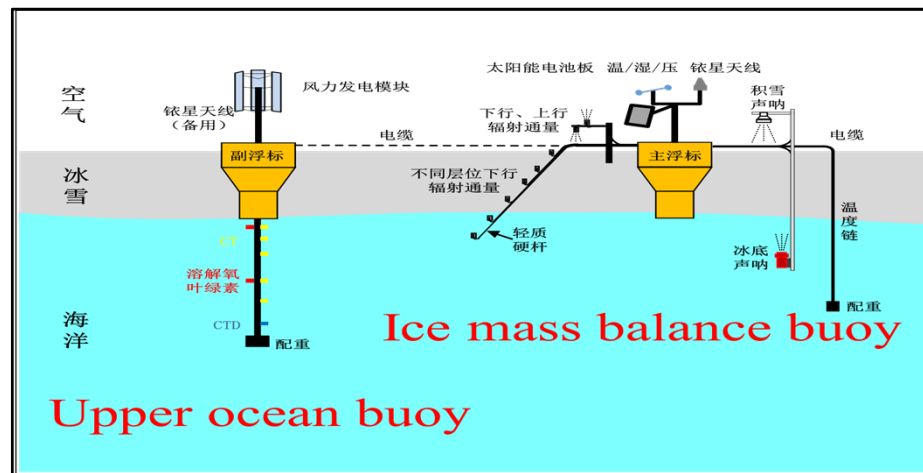


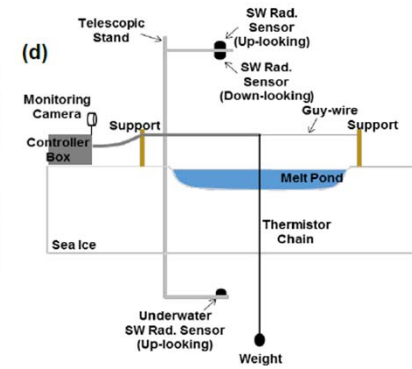
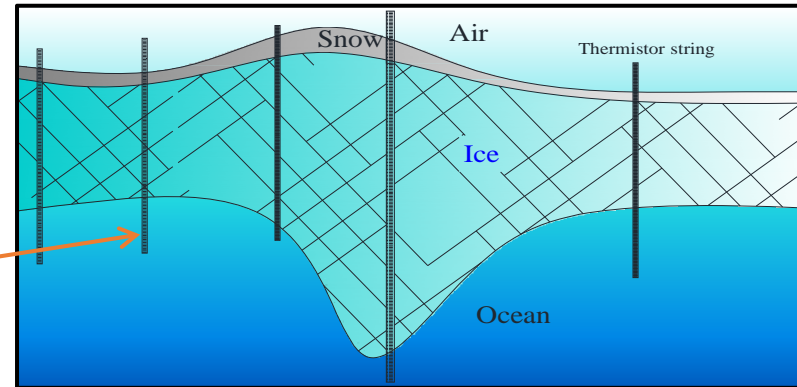
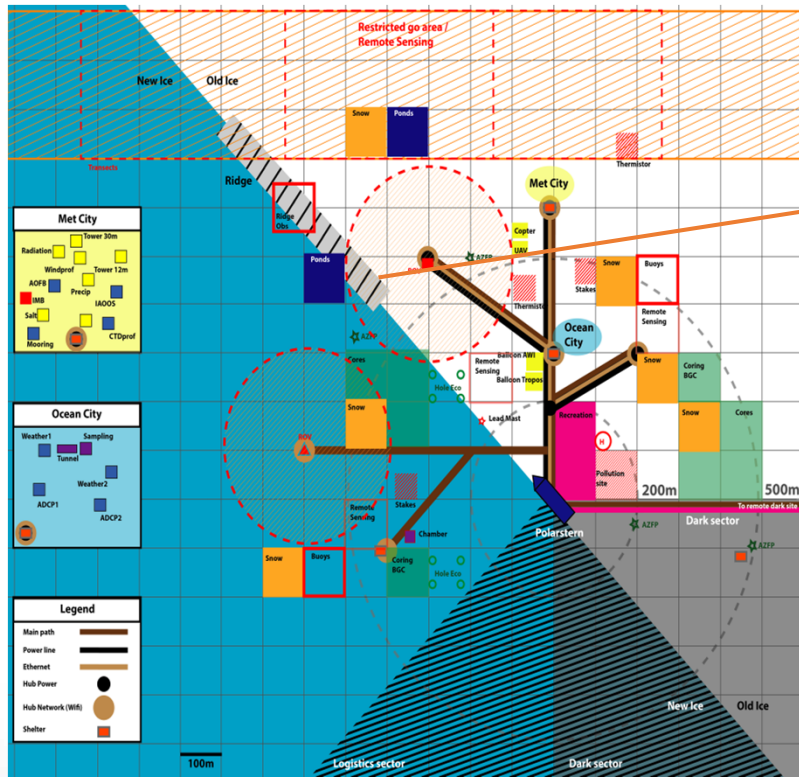


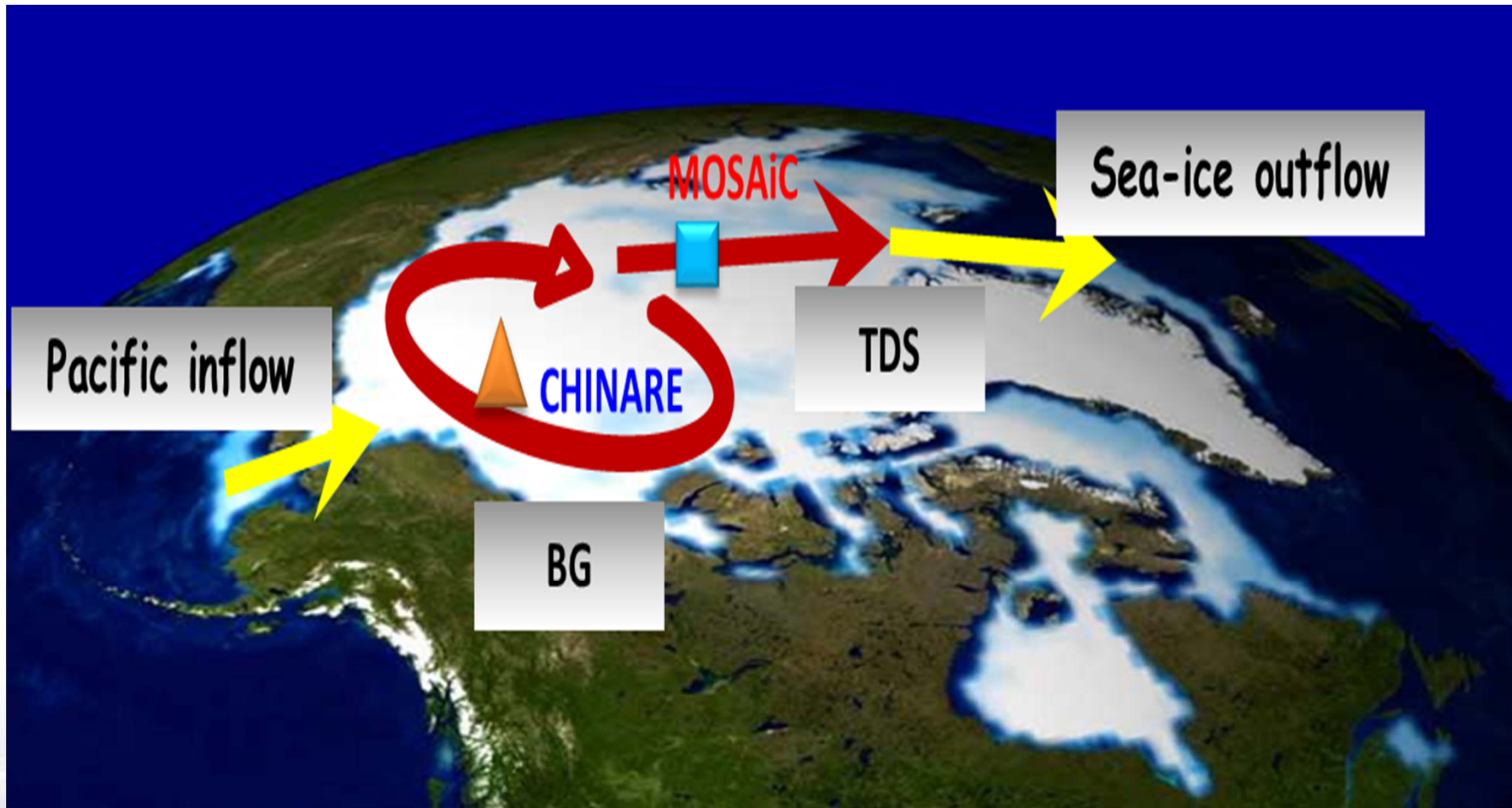
M02
(20-30cm ice)



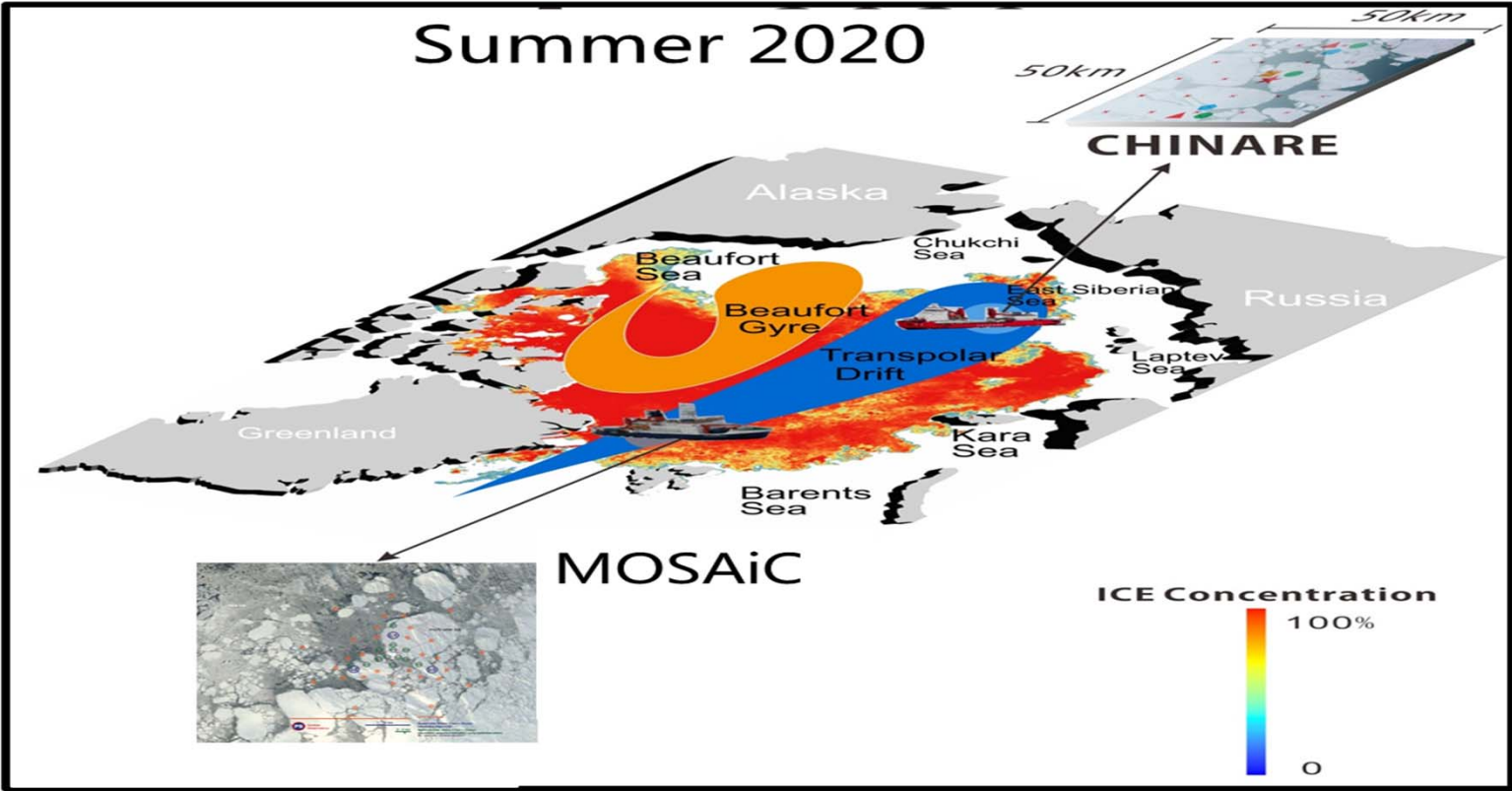
B=BioOceanProf.
P=OceanProf./LIDAR/IMB
A=ATMOS
F=AOFB
I=IMB/snow
O=biooptical(ITBOB)







Summer 2020



Thank you for your attention!

