

# Nansen Environmental and Remote Sensing Center

Torill Hamre  
torill.hamre@nersc.no

# INTAROS Data Catalogue and iAOS Portal

The objective of the INTAROS Data Catalogue is to provide access to datasets collected or generated in the project. The iAOS Portal contains the INTAROS Data Catalogue and provides access to additional selected data from other sources and services developed within the project as well as in spin-off projects. Together the data catalogue and portal offer a joint access point to the data incorporated by the integrated Arctic Observation System (iAOS).

INTAROS collects data in different areas (Fig.1) and spheres, using scientific instruments and through community-based monitoring. These data as well as data from earlier projects documented and formatted by partners in the project are registered in the **INTAROS Data Catalogue**. The metadata for each dataset includes, among others, a list of parameters, keywords, data license, available formats, contact details and links for data access.

The **iAOS Portal** provides access to selected data from other data repositories, chosen services developed in the project and descriptions of some of the observing systems feeding data into the iAOS (Fig.2).

Users can search the INTAROS Data Catalogue and the iAOS Portal by multiple facets:

- Title (free text)
- Keyword
- Data provider
- License
- Format

INTAROS Data Catalogue:

<https://catalog-intaros.nersc.no/>

iAOS Portal:

<https://portal-intaros.nersc.no/>

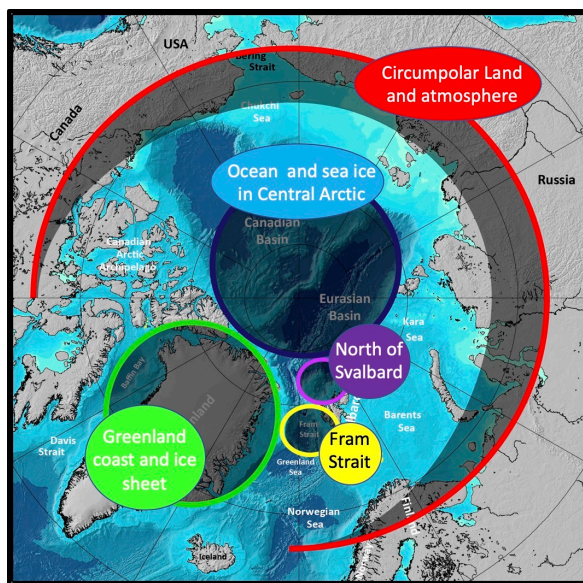


Figure 1 . Regions targeted in INTAROS.

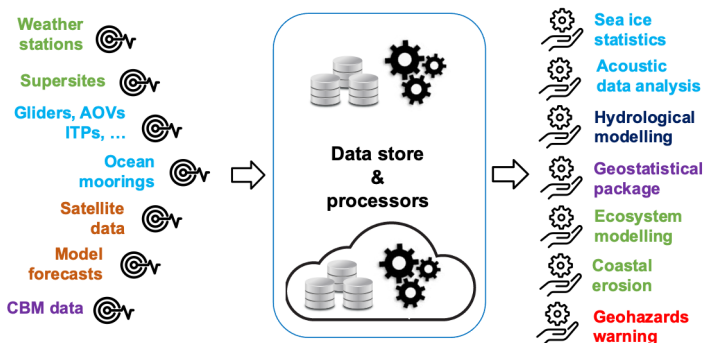


Figure 2. Data value chain in iAOS.



The INTAROS partners collecting or generating data in the project have contributed to the INTAROS Data Catalogue

